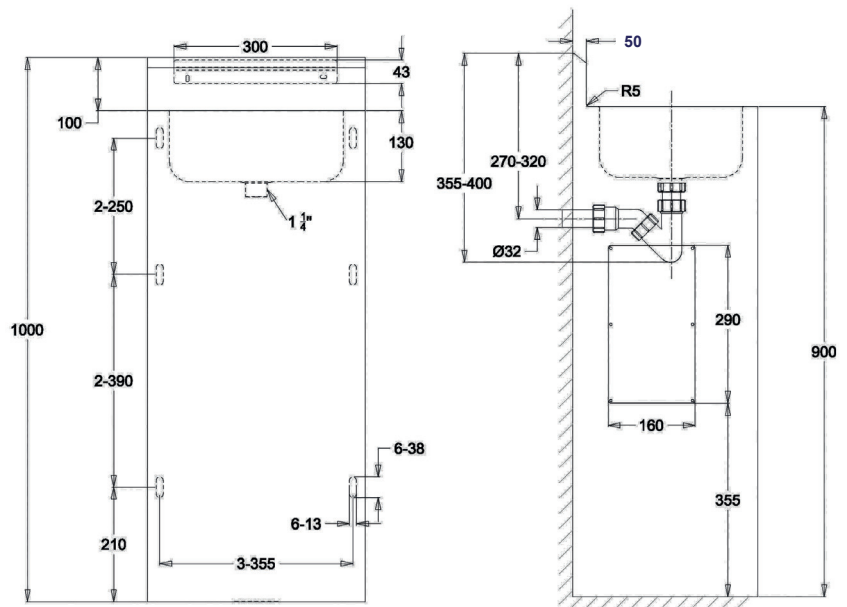
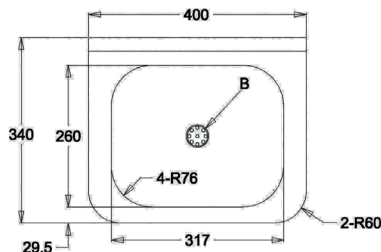


A tall, rectangular stainless steel sink unit, likely for a laboratory or industrial setting. It features a single, deep basin at the top. The side panel on the left has a vertical handle or latch mechanism. The unit is made of polished stainless steel and is shown against a plain white background.

A tall, rectangular, white ceramic pedestal sink. It has a single faucet and a drain. The sink is shown from a three-quarter perspective, highlighting its clean, modern lines.



Dicke des Waschbeckens 1,5 mm,
Dicke der Schürzenverkleidung 2,0 mm
Becken: B 317 x H 130 x T 260 mm,
Spritzschutzwand: H 100 x T 25 mm
Anschluss V und H: Montage vom dahinterliegenden
Technikraum aus.



www.loggere.de