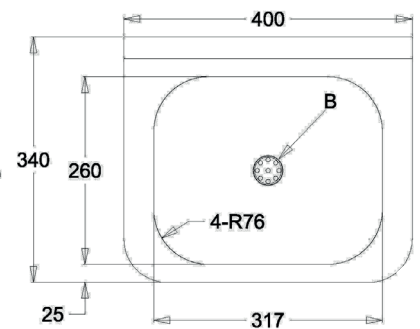
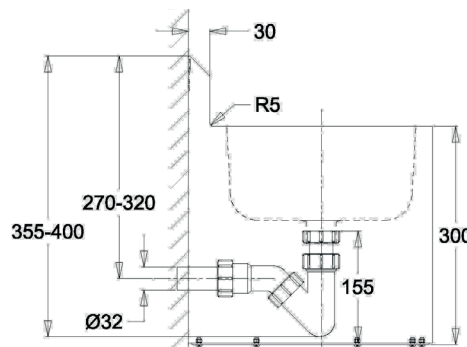
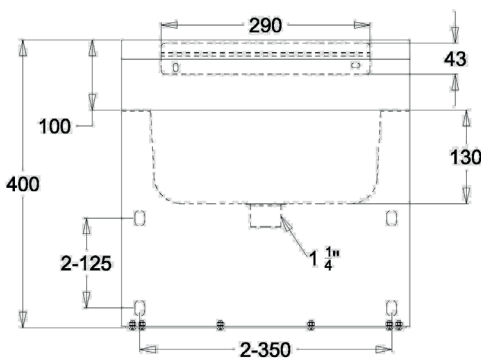
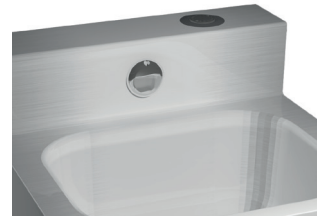


A black, rectangular, self-contained unit, likely a portable toilet or a specialized storage container, with a dark, possibly stainless steel, interior basin. The unit has a thick, solid appearance with rounded corners and a flat top surface. The interior is a lighter, metallic-looking color, suggesting a stainless steel or similar durable material. The unit is shown from a three-quarter perspective, highlighting its compact and functional design.



Material nichtrostender Stahl	WerkstoffNr. 1.4301	Materialdicke 1,5 mm	Oberfläche gebürstet
Modell	Bezeichnung	BxHxT in mm	ArtikelNr.
ROBUSTO 55-V	Montage von vorn ohne Hahnloch	400x400x340	135071
ROBUSTO 55-H	Mont. von hinten mit Gewindest. ohne Hahnl.	400x400x340	135072
ROBUSTO 55-SS	selbstschießend, mit Wasserauslauf und Leitungen	400x400x400	135082
ROBUSTO 55-P	mit PIEZO- Steuerung, Magnetventil und auslauf	400x400x400	135083
Hahnlochbohrung	Ø 35mm		910903

